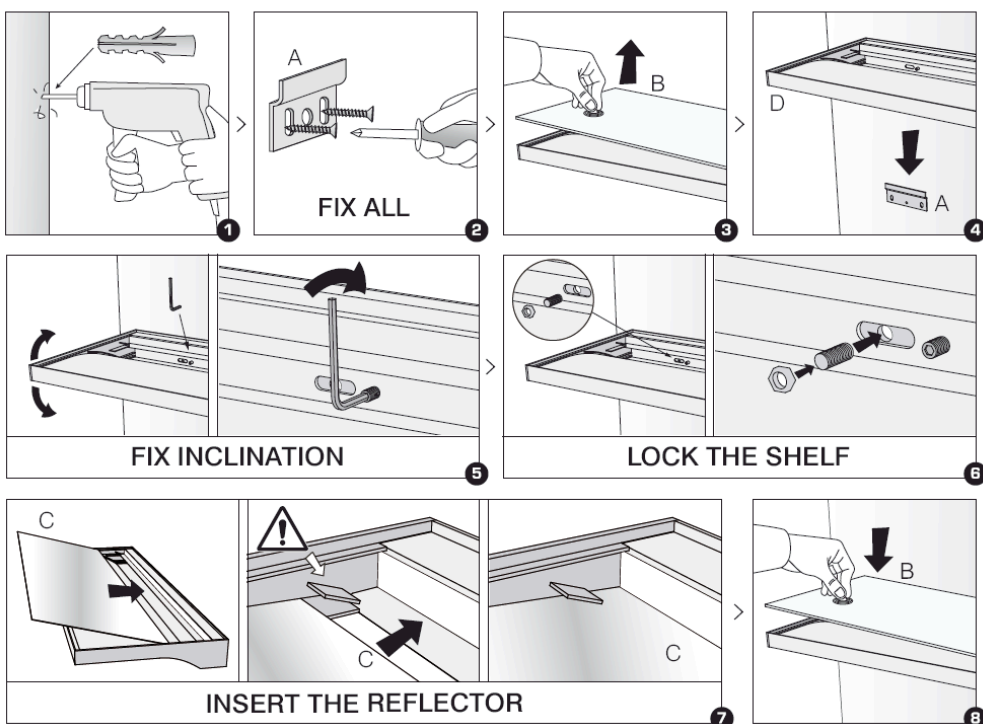
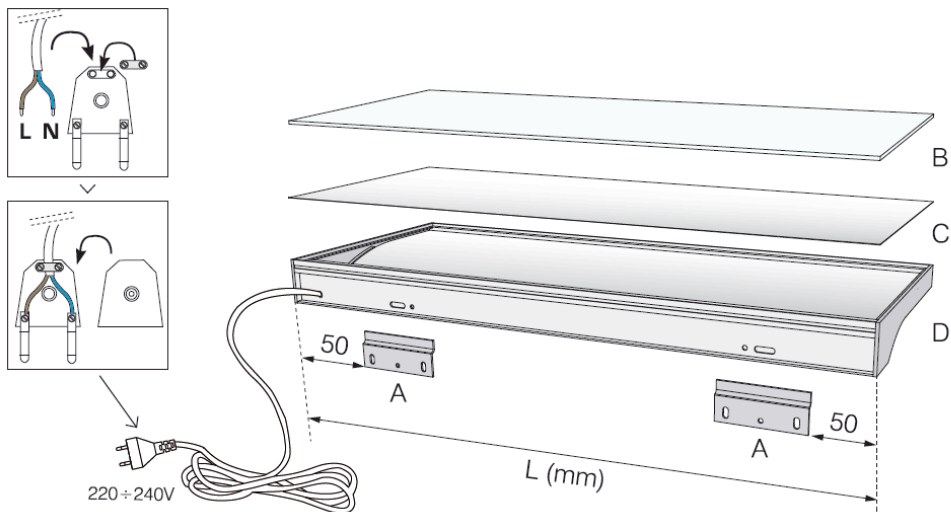


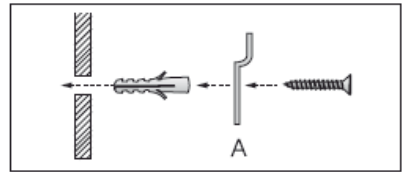
# LEYTON



**EN** CAREFULLY READ THE WARNINGS ON THE BACK

The **8x51mm** screw anchors provided must only be used on brick or reinforced concrete walls. For wood (minimum thickness of **19 mm**) use only the self-threading **5x60mm** screw provided, making a **3.5 mm** diameter hole on the surface; for wood chip, **M5** bolts, washer and nut.

1. Make a hole in the wall and position the dowels  
(Make sure that the dowels are secured properly)
2. Secure the plates (**A** - all of them) in line at an external distance of less than **50mm** per side with respect to the side of the bracket  
(screws included)
3. Lift up and remove the glass (**B** - using the special suction cup)
4. Insert the bracket (**D** - without the glass covering) on the profiles
5. Tighten (using an Allen wrench) the two dowels from the inside of the bracket (adjusting their angle)
6. Tighten the bracket:
  - Screw the dowels into the central hole of the plate
  - Screw the nuts onto the dowels
7. Insert the lamp reflector (**C** - reflective metal sheet)
8. Position the glass (**B** - if necessary using the suction cup)



 **MAX 10 kg**  
Evenly distributed  
Carico massimo / Maximum load  
Maximale Belastung / Charge max  
Carga máxima / Максимальная нагрузка